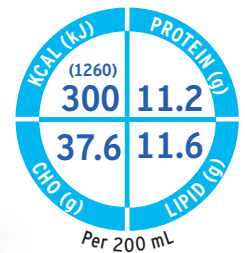




**FRESENIUS
KABI**

caring for life



Fresubin® Energy DRINK

Extra energy with plenty of choices

High energy oral nutritional supplement for the dietary management of patients with or at risk of malnutrition, in particular with increased energy needs



Contains high quality protein for balanced amino acid provision¹

Fibre free for patients who cannot tolerate fibre²

Available in a variety of flavours to support compliance³

For Healthcare Professionals Only

¹Meets nutrient reference values required for complete nutrition⁴

Fresubin® Energy DRINK

Available in **four** delicious flavours
in 200 mL EasyBottle

Nutritional Information

Average content		100 mL	bottle = 200 mL
Energy value	kJ (kcal)	630 (150)	1260 (300)
Fat (35% Energy)	g	5.8	11.6
of which SFA*	g	0.4/0.5 ^a	0.8/1.0 ^a
of which MUFA**	g	3.8/3.7 ^a	7.6/7.4 ^a
of which PUFA***	g	1.6	3.2
Carbohydrate (50% Energy)	g	18.8/18.5 ^a	37.6/37.0 ^a
of which sugars	g	3.9 - 6.3	7.8 - 12.6
of which lactose	g	≤ 0.27	≤ 0.54
Fibre	g	0/0.5 ^a	0/1.0 ^a
Protein (15% Energy)	g	5.6	11.2
Water	mL	78	156
Osmolarity	mosmol/L	355 - 405	
Osmolality	mosmol/kg H ₂ O	460 - 530	
Minerals and trace elements			
Sodium	mg	80/85 ^a	160/170 ^a
Potassium	mg	135/140 ^a	270/280 ^a
Chloride	mg	100	200
Calcium	mg	135/130 ^a	270/260 ^a
Magnesium	mg	21/24 ^a	42/48 ^a
Phosphorus	mg	80/85 ^a	160/170 ^a
Iron	mg	2.0	4.0
Zinc	mg	1.5	3.0
Copper	µg	300	600
Manganese	mg	0.4	0.8
Iodine	µg	30	60
Fluoride	mg	0.2	0.4
Chromium	µg	10	20
Molybdenum	µg	15	30
Selenium	µg	10	20
Vitamins and other nutrients^a			
Vitamin A	µg RE ^o	170	340
of which β-Carotene	µg RE ^o	50	100
Vitamin D ₃	µg	2.0	4.0
Vitamin E	mg α-TE ^{oo}	3.0	6.0
Vitamin K ₁	µg	16.7	33.4
Vitamin B ₁	mg	0.23	0.46
Vitamin B ₂	mg	0.32	0.64
Niacin	mg NE ^{ooo}	3.0	6.0
Vitamin B ₆	mg	0.33	0.66
Vitamin B ₁₂	µg	0.6	1.2
Pantothenic acid	mg	1.2	2.4
Biotin	µg	7.5	15.0
Folic acid	µg	50	100
Vitamin C	mg	15	30
Choline ^a	mg	26.7	53.4

*saturated fatty acids (SFA), **monounsaturated fatty acids (MUFA),

***polyunsaturated fatty acids (PUFA)

^aChocolate Flavour

^oretinol equivalents (RE), ^{oo}alpha-tocopherol equivalents (α-TE), ^{ooo}niacin equivalents (NE) ^aanalysed value



General Information

Food for special medical purposes:

Nutritionally complete, high-caloric (1.5 kcal/mL), fibre free^a oral nutritional supplement. For the dietary management of patients with or at risk of malnutrition in particular for patients with increased energy needs.

Dosage:

To be determined by a healthcare professional according to patients' needs. Recommendation for supplementary nutrition, 2 - 3 bottles (600 - 900 kcal)/day or complete nutrition, 5 - 7 bottles (1500 - 2100 kcal)/day.

Important notice:

To be used under medical supervision. Suitable as sole source of nutrition. Not suitable for children <3 years. Use with caution in children <6 years. Not suitable for patients with galactosaemia. Ensure adequate fluid intake.

Not for parenteral (I.V.) use!

Instruction for use:

Best served chilled. Shake well before use. Store at room temperature. Opened bottles may be stored in a refrigerator for up to 24 hours.

Additional considerations:

Not suitable whenever enteral nutrition is not permitted such as in acute gastrointestinal bleeding, ileus and shock. Use with caution in severe organ failure with impaired metabolism and severe forms of malassimilation.

Not suitable for patients with congenital inability to metabolise nutrients contained in Fresubin Energy DRINK^{^^}.

[^]Flavour Chocolate contains traces of fibre from cocoa powder.

^{^^}Flavour Cappuccino contains traces of caffeine (0.55 mg/100 mL).

Ingredients

Fresubin Energy DRINK Vanilla: Water, maltodextrin, milk protein, vegetable oils (rapeseed oil, sunflower oil), sucrose, flavouring, potassium citrate, sodium citrate, emulsifiers (E 471, soya lecithin), sodium chloride, potassium chloride, vit. C, choline chloride, magnesium oxide, acidity regulator (E 330), iron pyrophosphate, zinc sulphate, niacin, vit. E, pantothenic acid, manganese chloride, copper sulphate, vit. B₆, vit. B₂, sodium fluoride, β-carotene, vit. B₁, vit. A, folic acid, chromium chloride, sodium molybdate, vit. K₁, potassium iodide, sodium selenite, biotin, vit. D₃, vit. B₁₂.

Allergen Information: Contains milk and soy. Low lactose and gluten free.

Halal & Kosher certified.

Product ingredients for one flavour only. Detailed ingredient lists of the other flavours can be requested from ensupport-anz@fresenius-kabi.com

Flavours

Vanilla, Chocolate, Cappuccino, Neutral.

References

1. World Health Organization. Protein and amino acid requirements in human nutrition. WHO technical report series 2007; 935.
2. Lochs H, Allison SP, Meier R, Pirlich M, Kondrup J, Schneider S, et al. Introductory to the ESPEN Guidelines on Enteral Nutrition: terminology, definitions and general topics. Clin Nutr 2006;25:180-186.
3. Hubbard GP, Elia M, Holdaway A, Stratton RJ. A systematic review of compliance to oral nutritional supplements. Clin Nutr 2012, 31:293-312.
4. National Health and Medical Research Council: Nutrient Reference Values Australia and New Zealand. <https://www.eatforhealth.gov.au/nutrient-reference-values>. Accessed May, 2023.



**FRESENIUS
KABI**

caring for life

Fresenius Kabi Australia Pty Limited
Level 2, 2 Woodland Way,
Mount Kuring-gai NSW 2080
Phone 1300 732 001
Fax 1300 304 384
www.fresubin.com.au
www.strengthen.com.au

Fresenius Kabi New Zealand Limited
The HSBC Tower
Level 14, 188 Quay Street
Auckland 1010 New Zealand
Phone 0800 144 892
www.fresenius-kabi.com/nz
PM2022.1517 Pub: June 2023