

Product Specification

Peri Peri Spice/Glaze - Natural GF

Product Code 22628

Pack Sizes

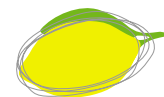
Sales Code	Packaging
SGGF1350	4x2.5kg

Description

A blend of critically selected ingredients designed to impart flavour and eye appeal to poultry and meat portions.

Physical

Flavour	Salty, acidic lemon, tomato with garlic and mild chilli
Colour	Brown orange powder with green and beige flecks
Odour	Paprika, citris and chilli
Appearance	Free flowing powder with vegetable and herb particulates



Directions for Use

Can be used as a glaze directly onto meat portion, or as a marinade using the following directions:
Glaze: Use 150 (13%) grams of spice per kilogram (87%) of meat. Tumble and allow to stand for 5 minutes for the glaze to develop.
Marinade: Mix 100 (8.3%) grams of glaze with 100ml (8.3%) of water, pour over 1.0 Kg (83.4%) meat and tumble.

Best suited to pork, lamb, chicken or fish.

Regulatory Status

This product has been produced in accordance with the requirements of FSANZ Code.

Ingredient Declaration

Maltodextrin, Salt, Herb & Spices, Dehydrated Vegetables, Tomato Powder, Food Acid (Citric Acid), Natural Flavours, Vinegar Powder, Vegetable Gums (Xanthan, Guar), Spice Extract

Labelling

Each label on or attached to the packaging will clearly state the:- Product Name, Sales Code, Net Weight, Batch Number, Best Before or Use by.

Shelf Life

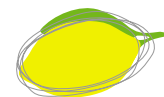
Best Before 18 months from the date of manufacture when stored unopened in a clean, cool and dry location.

GMO Status

Non-GMO

Irradiation Status

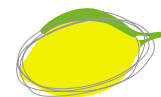
No



Mandatory Warnings/Advisory Statements

Allergen	Presence
Cereals Containing Gluten and their Products	Absent
Crustacea and their products	Absent
Egg and Egg products	Absent
Fish and Fish products	Absent
Milk and Milk products	Absent
Tree nuts and their products	Absent
Sesame Seeds and their products	Absent
Peanuts and their products	Absent
Soybeans and their products	Absent
Added Sulphite (in concentration >10mg/kg)	Absent
Bee pollen	Absent
Propolis	Absent
Honey	Absent
Royal Jelly	Absent
Evaporated Milks, dried Milks and equivalent products made from soy or rice, where these foods contain no more than 2.5% m/m fat as reconstituted to directions for direct consumption	Absent
Aspartame (Phenylalanine)	Absent
Quinine	Absent
Guarana or Extracts of Guarana	Absent
Phytosterol Esters	Absent
Tall Oil Phytosterol	Absent
Caffeine	Absent
Milk and beverages made from soy or rice, where these foods contain no more than 2.5% m/m fat	Absent
Unpasteurised egg products	Absent
Unpasteurised Milk and unpasteurised Milk products	Absent

Flavour Makers has in place Quality and Food Safety Systems to address allergen management.



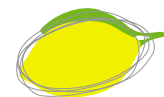
Country of Origin

This product is manufactured in Australia using imported (78.45%) and local ingredients (21.55%).

Nutritional Analysis

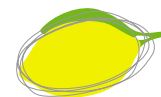
NUTRITION INFORMATION			
Serving size: 100g			
		Average quantity per serving (100g)	Average quantity per 100g
Energy	kJ	1089	1089
Energy	kcal	259	259
Protein	g	6.7	6.7
Fat - Total	g	2.5	2.5
Fat - Saturated	g	0.4	0.4
Carbohydrate - Total	g	44.7	44.7
Carbohydrate - Sugar	g	10.3	10.3
Dietary Fibre	g	8.4	8.4
Sodium	mg	8703	8703

Nutrition information provided above are theoretical averages only and have been calculated from information obtained from Suppliers Specifications for ingoing raw materials.



Additional Sensitive Ingredients Information

Ingredient	Presence
Added Sugar	Absent
Added Salt	Present
Added MSG	Absent
Artificial Flavour	Absent
Artificial Sweetener	Absent
Preservatives	Absent
Antioxidant	Present
Hydrolysed Vegetable Protein	Absent
Yeast and derivatives	Absent
Herb & Spice Extracts	Present
Allium Genus (eg Onion, spring onion, leek, garlic)	Present
Allium Derivatives	Absent
Legumes (eg Beans, peas, lentils, beans sprouts)	Absent
Animal products and derivatives	Absent
Artificial Colour	Absent
Lupin	Absent
Chilli	Present
Celery	Absent
Palm Oil	Absent



Microbiological Parameters

	Target Limit	Critical Limit
TPC/g	<100,000	1,000,000
MPN Coliforms (TCC)/g	<10	100
MPN E. Coli/g	<3	10
Salmonella In 25g	Not Detected	Not Detected
Yeast/g	500	1,000
Mould/g	500	1,000

Additional Information

Maltodextrin from Tapioca or Corn
Contains natural occurring Sulphites at approx. 30ppm