



SUITABLE FOR LABORATORY AUTOMATION

# eSwab<sup>®</sup>

LIQUID BASED AND MULTIPURPOSE  
COLLECTION AND TRANSPORT SYSTEM



Innovating Together™

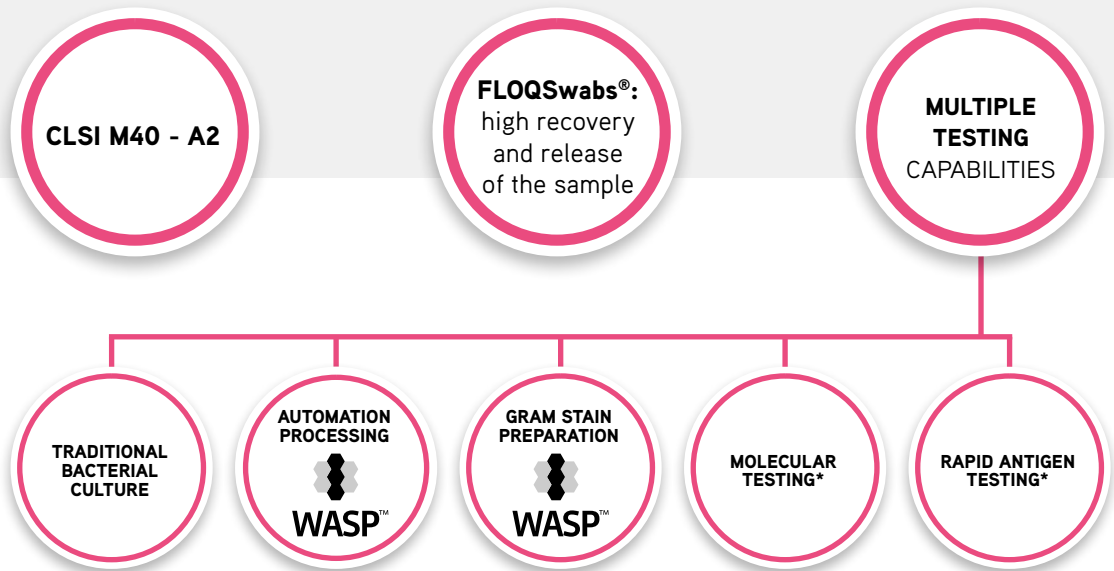
[copangroup.com](http://copangroup.com)



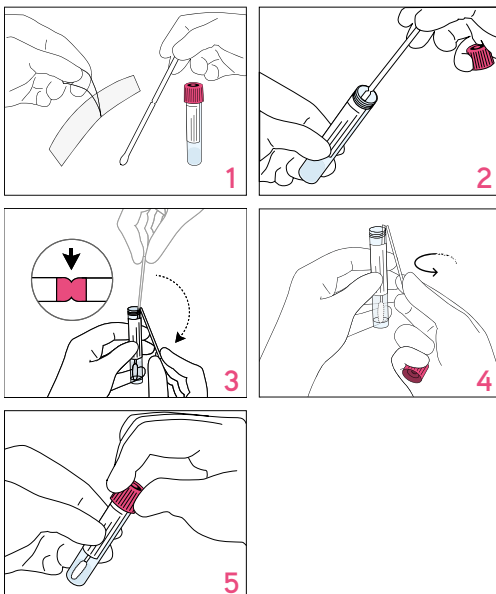
**eSwab®:** device for the collection and transport of clinical specimens containing aerobes, anaerobes, fastidious bacteria, viruses and Chlamydiae.

In the laboratory, specimens collected and transported in eSwab® can be processed using standard clinical laboratory procedures for:

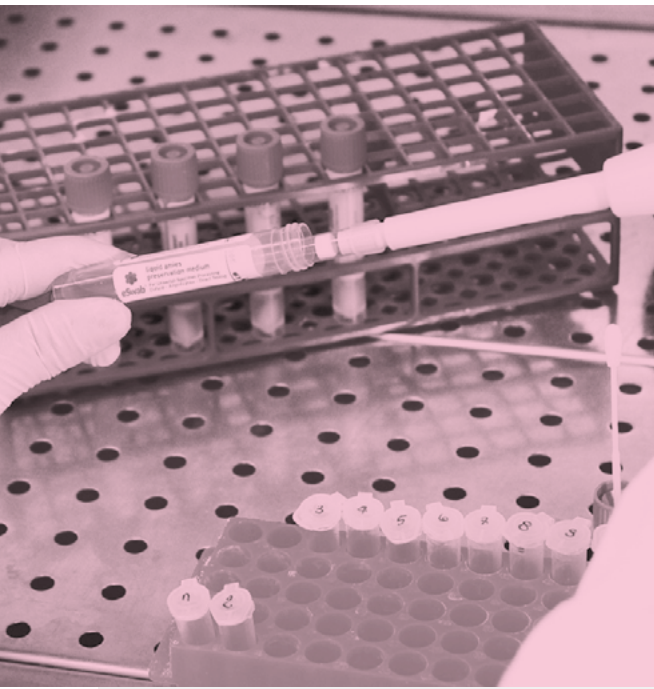
- > bacterial culture of anaerobes, aerobes and fastidious organisms
- > antigens and nucleic acids detection of bacteria, viruses and Chlamydia



## > HOW TO USE



- > **Open** the eSwab® sample collection pouch and remove the tube and swab
- > **Collect** the sample from the patient
- > **Unscrew** and remove the cap from eSwab® tube making sure not to spill the medium
- > **Break** the swab off into the tube as follows:
  - With the other hand grasp the swab shaft at the very end with the thumb and first finger
  - Lean the part of the shaft with the breaking point against the rim of the tube
  - Bend the swab shaft at a 180 degrees angle to break it off at the colored breakpoint mark. If needed, gently rotate the swab shaft to complete the breakage and take away the upper part of the swab shaft
  - Discard the broken handle part of the swab shaft into an approved medical waste disposal container
- > **Replace** cap on the tube and secure tightly
- > **Write** patient information on the tube label or apply patient identification label. Send the sample to the test laboratory



## > KEY FEATURES

- > **Ready-to-use** and **versatile**
- > **Bacterial recovery** up to 48h at RT (up to 24h for *N. gonorrhoeae*)
- > **FLOQSwabs®**: optimization of sample collection and elution into the transport medium
- > Multi Test Device: one collection for different analysis. **eSwab®** is not only for bacterial culture, but also preserves nucleid acids and antigens of Bacteria, Viruses, Chlamydiae
- > Possibility to store it for back up purpose for molecular and rapid antigen assays up to 6 months at -20°C

## Different kits respond to different needs



Regular, minitip, flexible minitip, pediatric swabs geometries are available for the different body orifices



eSwab® MRSA kit for pooling of multiple sampling



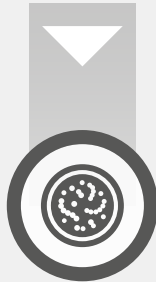
## SAMPLE WORKFLOW



**SAMPLE COLLECTION**



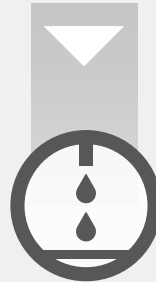
**SAMPLE TRANSPORT AND PRESERVATION**



**TRADITIONAL BACTERIAL CULTURE**



**GRAM STAIN**



**RAPID ANTIGEN TEST**



**MOLECULAR PLATFORM**



**WASP™**

European Patent # 1608268  
 US Patent # 8,114,027  
 US Patent # 8,317,728  
 US Patent # 8,979,784  
 US Patent # 9,011,358  
 US Patent # 9,173,779

Canadian Patent # 2,515,205  
 Japanese Patent # 4579902  
 Chinese Patent # 101103931  
 Australian Patent # 2004226798  
 New Zeland Patent # 541560



## ORDERING INFORMATION

Please contact [info@copangroup.com](mailto:info@copangroup.com) for complete ordering information



**COPAN ITALIA SPA**

Via F. Perotti 10  
 25125 - Brescia,  
 Italy

t. +39 030 2687211  
 f. +39 030 2687250  
[info@copangroup.com](mailto:info@copangroup.com)  
[www.copangroup.com](http://www.copangroup.com)

This document contains information on products which is targeted to a wide range of audiences and may contain product details or information otherwise not accessible or valid in your country. Please be aware that we do not take any responsibility for accessing such information which may not comply with any valid legal process, regulation, registration or usage in the country of your origin.

Brochures hardcopies may not include the latest updates and changes. Please refer to Copan website ([www.copangroup.com](http://www.copangroup.com)) to view and/or download the most recent controlled version of the brochures. Brochures are mainly intended for marketing purposes. Always consult product inserts and instructions for use for the appropriate use of the products. Product clearance and availability restrictions may apply in some Countries. Please consult Copan for the availability of these products in your Country.

©2016 Copan Group. All rights reserved. The trademarks mentioned herein are property of Copan Italia S.p.A.

JMKC016 Rev.00 Date 2016.04

